

夢の途中コード進行

作曲者/編曲者

Intro

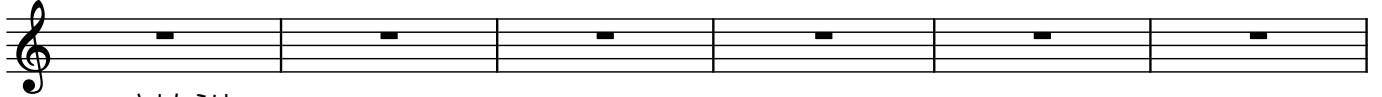
Dm7

E7sus4

E7

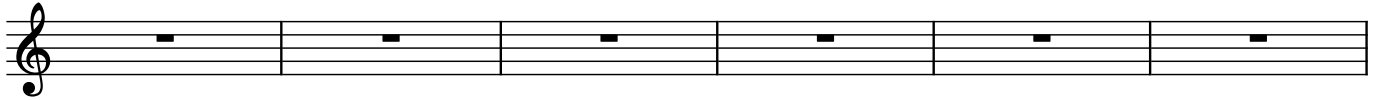


5 Am G FM7 E7sus4 Em7 Am G

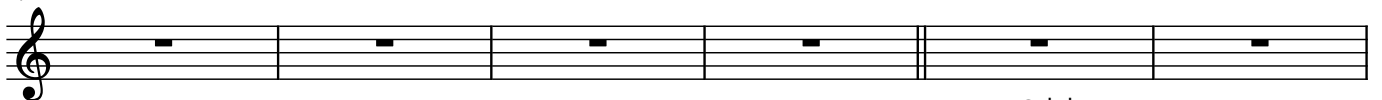


さよならは

11 FM7 E7sus4 Em7 Dm7 Am7

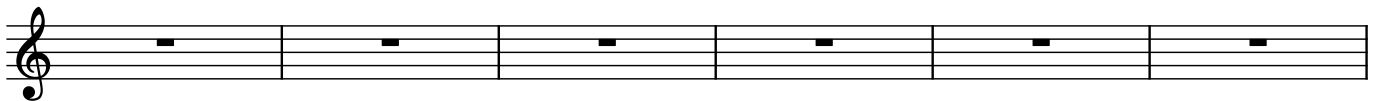


17 Bm7-5 E7sus4 E7 Am

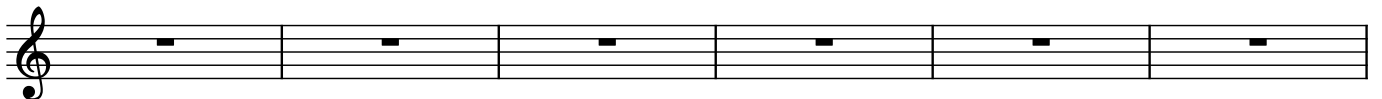


このまま

23 Dm7 Bm7-5 E7 Am



29 Am Dm7 Bm7-5



35 Am

